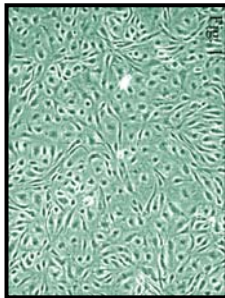


OCULAR CELL SYSTEM INNOPROFILE™ HUMAN RETINAL ENDOTHELIAL CELLS



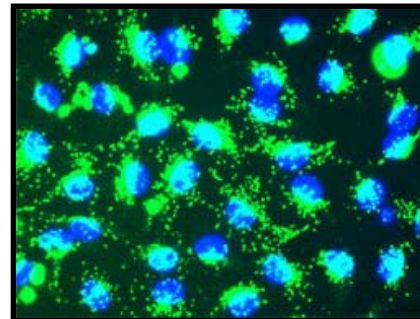
Cell Type:	Cryo-preserved Endothelial Cells
Catalog Number:	P10880
Source:	Human Retinal Tissue
Number of Cells:	5 x 10 ⁵ Cells / vial (1ml)
Storage:	Liquid Nitrogen

Human Retinal Endothelial Cells (HREC) provided by Innoprot are isolated from healthy human retinal tissue. HREC are cryopreserved on passage one and delivered frozen. HREC are guaranteed to further culture at the conditions provided in the technical sheet.

The eye contains highly vascularised and completely avascular tissues in close apposition. This specialized anatomy requires tight regulation of the balance between vascular quiescence and vascular growth. Retinal vascularization is a coordinated interaction of vascular cells, including endothelial cells, pericytes, and astrocytes, and a balanced production of positive and negative regulatory factors. In eye diseases associated with angiogenesis, this delicate balance is disturbed. Angiogenesis plays a crucial role in disorders responsible for most blindness such as diabetic retinopathy, retinopathy of prematurity, age-related macular degeneration, as well as a large number of other eye conditions. Human retinal endothelial cell cultures will surely continue to provide an in vitro model in the pathophysiological studies of vascular diseases in the human eye.

Recommended Medium

- Endothelial Cell Medium
(Reference: P60104)



Product Characterization

Immunofluorescent method

- vWF/Factor VIII
- CD31 (P-CAM)

Uptake of Dil-Ac-LDL

The cells test negative for HIV-1, HBV, HCV, mycoplasma, bacteria, yeast and fungi

Product Use

THESE PRODUCTS ARE FOR RESEARCH USE ONLY. Not approved for human or veterinary use, for application to humans or animals, or for use in vitro diagnostic or clinical procedures

INSTRUCTIONS FOR CULTURING CELLS

IMPORTANT: Cryopreserved cells are very delicate. Thaw the vial in a 37 °C waterbath and return them to culture as quickly as possible with minimal handling!

Set up culture after receiving the order:

1. Prepare a fibronectin coated flask (2 $\mu\text{g}/\text{cm}^2$, T-75 flask is recommended). Add 10 ml of sterile Dulbecco's phosphate buffered saline (DPBS) to a T-75 flask and then add 150 μl of fibronectin stock solution (1 mg/ml, Innoprot cat. no. P8248). Leave the flask in incubator overnight.
2. Prepare complete medium: decontaminate the external surfaces of medium and medium supplements with 70% ethanol and transfer them to sterile field. Aseptically open each supplement tube and add them to the basal medium with a pipette. Rinse each tube with medium to recover the entire volume.
3. Aspirate fibronectin solution and add 20 ml of complete medium to the flask. Leave the flask in the hood and go to thaw the cells. The fibronectin solution can be used twice.
4. Place the vial in a 37 °C waterbath, hold and rotate the vial gently until the contents are completely thawed. Remove the vial from the waterbath immediately, wipe it dry, rinse the vial with 70% ethanol and transfer it to a sterile field. Remove the cap, being careful not to touch the interior threads with fingers. Using a 1 ml eppendorf pipette gently re-suspend the contents of the vial.
5. Dispense the contents of the vial into the equilibrated, fibronectin coated culture vessels. A seeding density of 5,000 cells/ cm^2 is recommended. Note: Dilution and centrifugation of cells after thawing are not recommended since these actions are more harmful to the cells than the effect of DMSO residue in the culture.

It is also important that endothelial cells are plated in fibronectin coated flask that promotes cell attachment and growth.

6. Replace the cap or cover, and gently rock the vessel to distribute the cells evenly. Loosen cap if necessary to permit gas exchange.
7. Return the culture vessels to the incubator.
8. For best result, do not disturb the culture for at least 16 hours after the culture has been initiated. Change the growth medium the next day to remove the residual DMSO and unattached cells, then every other day thereafter. A healthy culture will display cobblestone or spindle shaped morphology, non-granular cytoplasm and the cell number will be double after two to three days in culture.

Maintenance of Culture:

1. Change the medium to fresh supplemented medium the next morning after establishing a culture from cryopreserved cells.
2. Change the medium every three days thereafter, until the culture is approximately 70% confluent.
3. Once the culture reaches 70% confluence, change medium every other day until the culture is approximately 90% confluent.

Subculture

1. Subculture the cells when they are over 90% confluent.
2. Prepare fibronectin coated flasks (2 $\mu\text{g}/\text{cm}^2$) one day before subculture.
3. Warm medium, trypsin/EDTA solution (T/E, Solution) trypsin neutralization solution (TNS), and DPBS to room temperature. We do not recommend warming the reagents and medium at 37°C waterbath prior to use.
4. Rinse the cells with DPBS.
5. Add 10 ml of DPBS first and then 2 ml of trypsin/EDTA solution into flask (in the case of T-75 flask); gently rock the flask to make sure cells are covered by trypsin/EDTA solution; incubate the flask at 37°C incubator for 1 to 2 minutes or until cells are completely rounded up (monitored with inverted microscope). During incubation, prepare a 50 ml conical centrifuge tube with 5 ml of fetal bovine serum (FBS); transfer trypsin/EDTA solution from the flask to the 50 ml centrifuge tube (a few percent of cells may detached); continue incubate the flask at 37°C for 1 minutes (no solution in the flask at this moment); at the end of trypsinisation, one hand hold one side of flask and the other hand gently tap the other side of the flask to detach cells from attachment; check the flask under inverted microscope to make sure all cells are detached, add 5 ml of trypsin neutralization solution to the flask and transfer detached cells to the 50 ml centrifuge tube; add another 5 ml of TNS to harvest the residue cells and transfer it to the 50 ml centrifuge tube. Examine the flask under inverted microscope to make sure the cell harvesting is successful by looking at the number of cells left behind. There should be less than 5%.
6. Centrifuge the 50 ml centrifuge tube (harvested cell suspension) at 1000 rpm (Beckman Coulter Allegra 6R centrifuge or similar) for 5 min; re-suspend cells in growth medium.
7. Count cells and plate cells in a new, fibronectin coated flask with cell density as recommended

Note: DPBS, trypsin/EDTA solution & trypsin neutralization solution are included in the "Primary Cells Detach Kit provided by Innoprot (Cat. Nº P60305).

Caution: Handling human derived products is potentially biohazardous. Although each cell strain testes negative for HIV, HBV and HCV DNA, diagnostic tests are not necessarily 100% accurate, therefore, proper precautions must be taken to avoid inadvertent exposure. Always wear gloves and safety glasses when working these materials. Never mouth pipette. We recommend following the universal procedures for handling products of human origin as the minimum precaution against contamination [1].

- [1]. Grizzle, W. E., and Polt, S. S. (1988) Guidelines to avoid personal contamination by infective agents in research laboratories that use human tissues. *J Tissue Culture Methods*. 11(4).

株式会社ケー・エー・シー

試薬事業部

〒661-0978 兵庫県尼崎市久々知西町2丁目1-20

(お問合せ先)

TEL : 06-6435-9747 FAX : 06-6435-9748

URL : <http://www.kacnet.co.jp/>

E-mail : cs-info@kacnet.co.jp